

# SATAKE



## **SAVCO SALES PVT. LTD.**

### **DESTONER / GRAVITY SELECTOR :**

### **Model No SGA15BD-T**



ESTD. 1942

#### **DESCRIPTION**

The Satake Destoner SGA separates stones and heavy impurities from grains, utilizing bulk density differences. Rigid, heavy-duty construction with thicker steel plates and a sturdy frame ensures long life.

This is the ideal machine for separating stones from grains in an efficient, trouble-free manner.

#### **FEATURES**

✓ **Stone Discharging and Resort Mechanism:**

The discharged stones from the primary sieves contain some grains. This mixed fraction is sent to the secondary sieve by a pneumatic transfer system, using a built-in fan. Stones are concentrated and discharged.

✓ **Very Low Maintenance:**

Heavy-duty construction, permanent lubrication and easy access to sieves for cleaning or replacement result in very low maintenance.

✓ **Compact Design:**

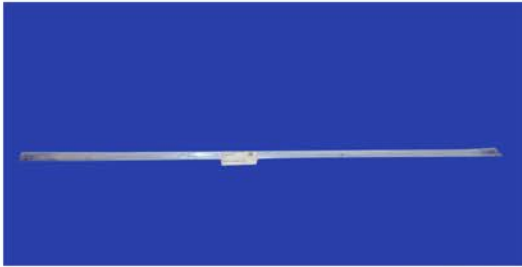
The Satake Destoner is a compact unit and requires less installation space. The vibratory drive eliminates the need for any pulleys, belts, eccentric bearings, etc. and contributes to the improved sanitation in plants.

## SPARE PARTS INFORMATION OF SGA 15BD-T

**MODEL**

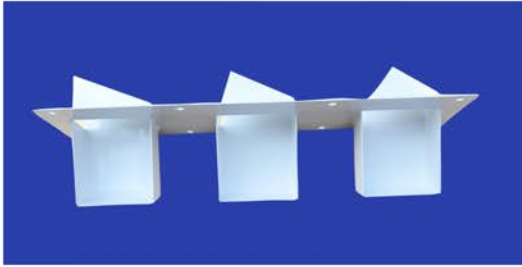
**PART NO**

**ITEM DETAIL**



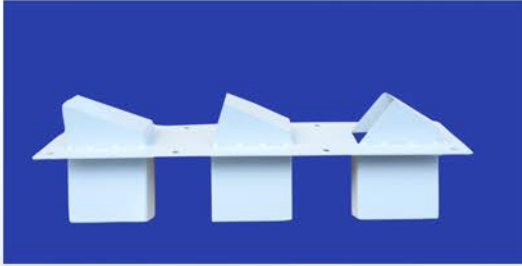
2-4480-3050

PLATE



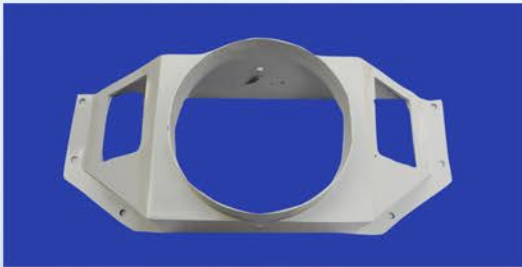
2-4485-0640-02T

CHUTE



2-4485-0650-02T

CHUTE



2-4485-5611

INLET



2-4485-5620-00T

PLATE

## SPARE PARTS INFORMATION OF SGA 15BD-T

**MODEL**

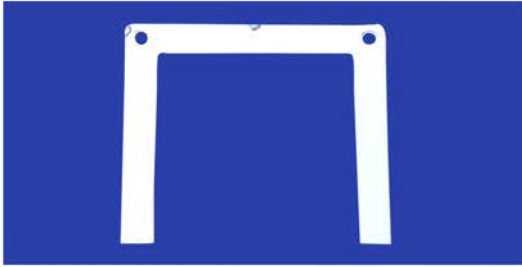
**PART NO**

**ITEM DETAIL**



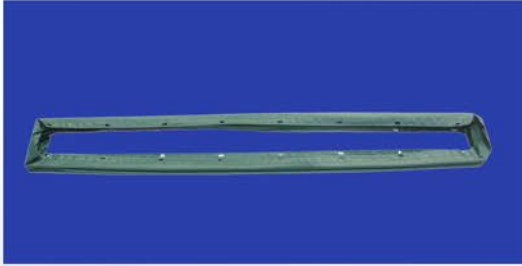
2-4485-5800

PLATE



2-4485-5810

PLATE



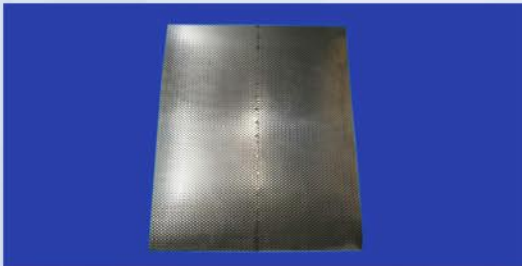
24481182000T

CANVAS



54036081001T

WOOD FRAME



T042661

UPPER SCREEN

## SPARE PARTS INFORMATION OF SGA15BD-T

**MODEL**

**PART NO**

**ITEM DETAIL**



T042732

CLOTH

67/B, N.S. ROAD, 2ND FLOOR, ROOM NO. 45, KOLKATA - 700001  
E-mail: [marketing@savcosales.com](mailto:marketing@savcosales.com) | Website: [www.savcosales.com](http://www.savcosales.com)

**For Any Details Contact Us -  
7076500155 | (033)2262-2551/2552/2191**